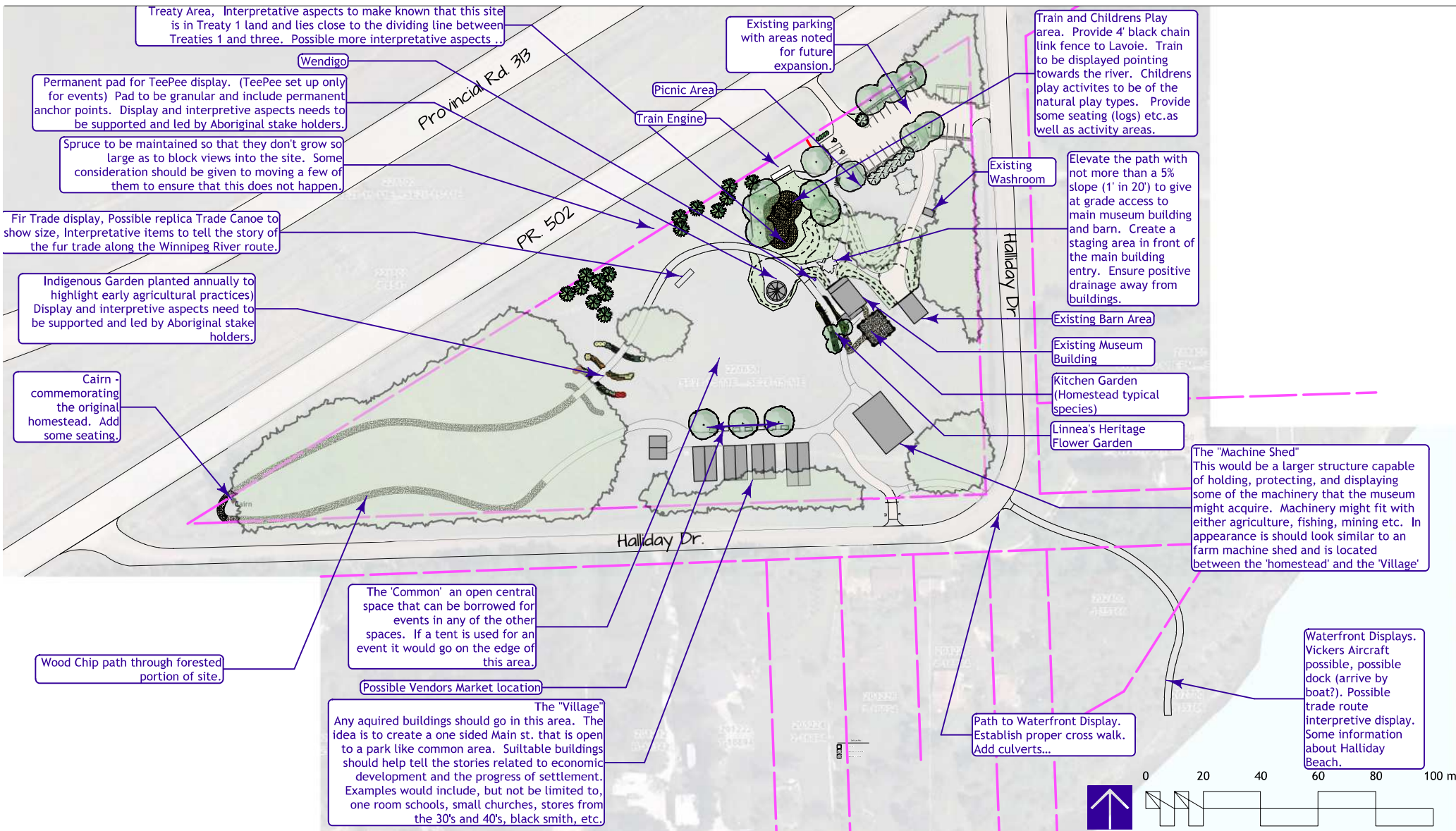


No.	Date	Issue Notes
Drawing No.		

LC-1 of 8

Halliday Park Master Plan Lac du Bonnet and District Historical Society Site Use Concept Site Use Zoning Diagram



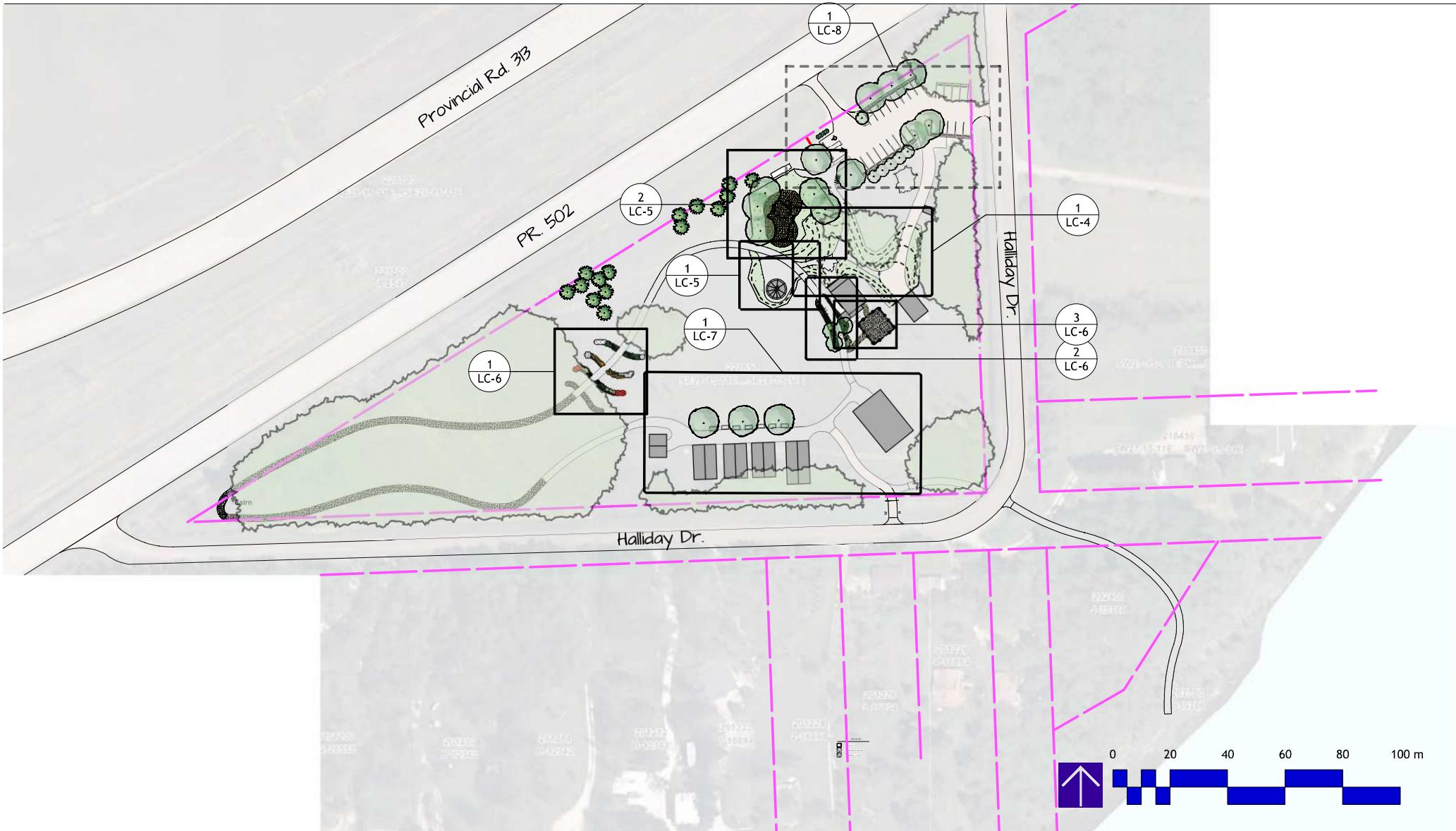


No.	Date	Issue Notes
Drawing No.		

LC-2 of 8

Halliday Park Master Plan Lac du Bonnet and District Historical Society Schematic Site Plan



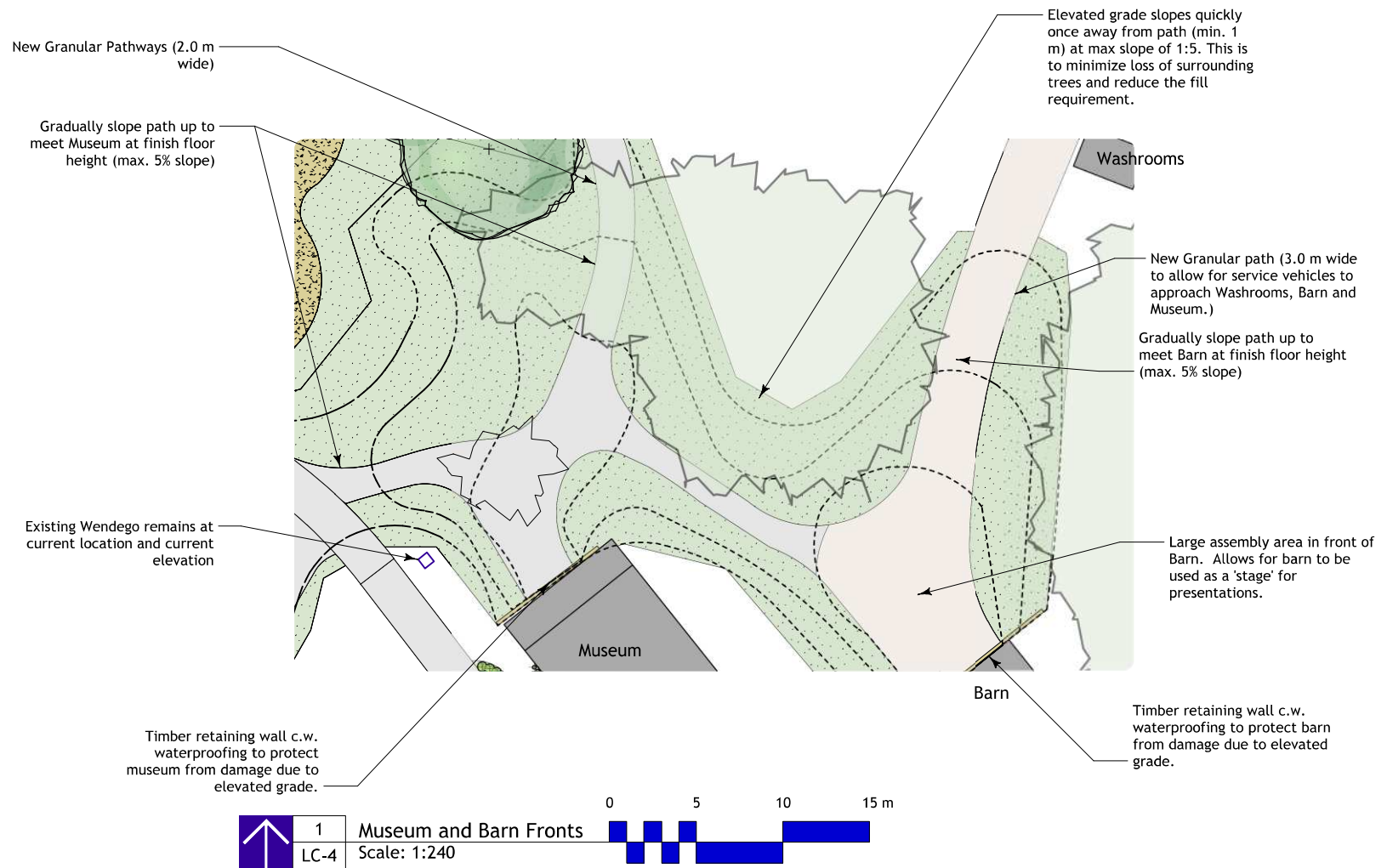


No.	Date	Issue Notes
Drawing No.		

LC-3 of 8

Halliday Park Master Plan Lac du Bonnet and District Historical Society Key Site Plan



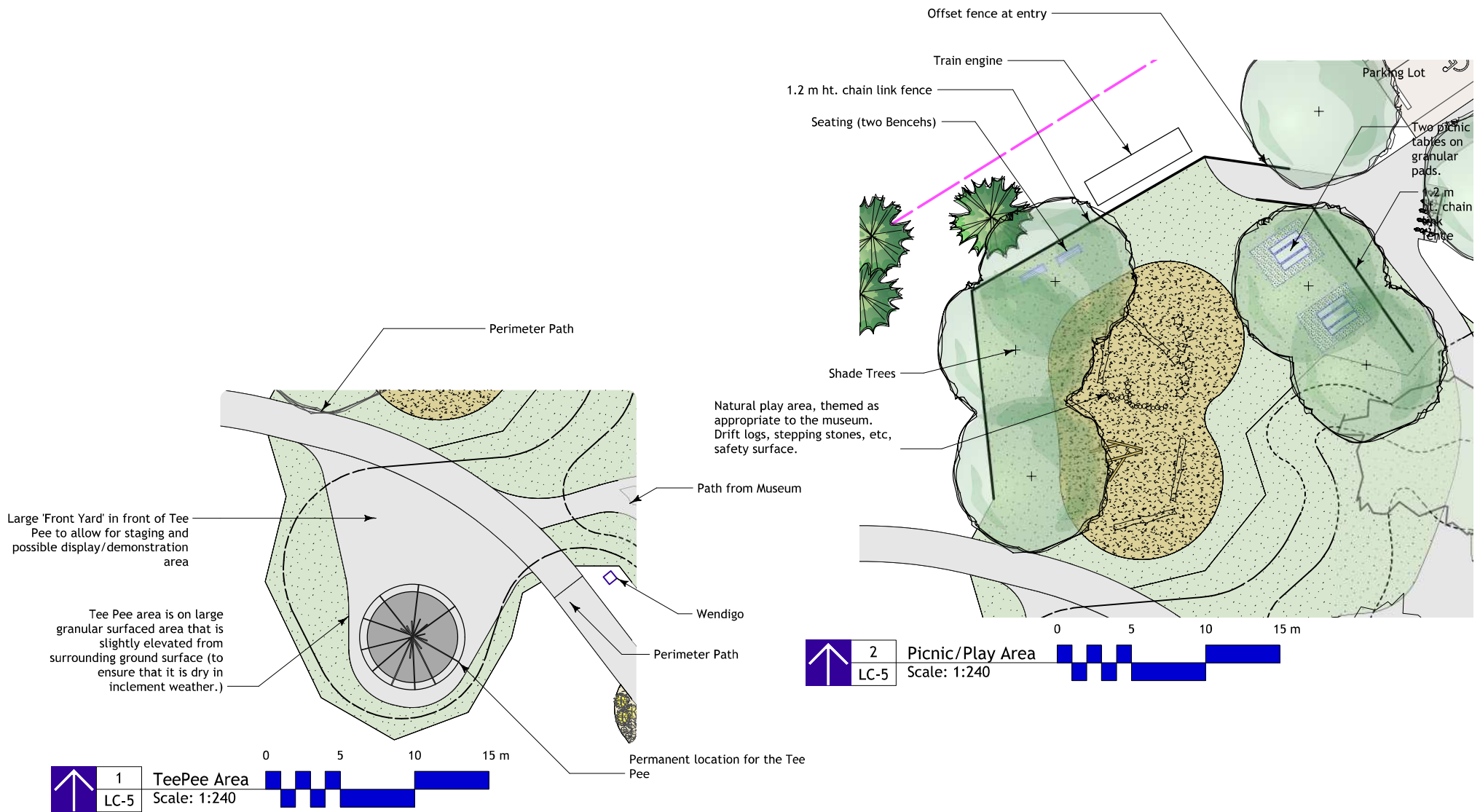


No.	Date	Issue Notes
Drawing No.		

LC-4 of 8

Halliday Park Master Plan Lac du Bonnet and District Historical Society Museum and Barn Front's



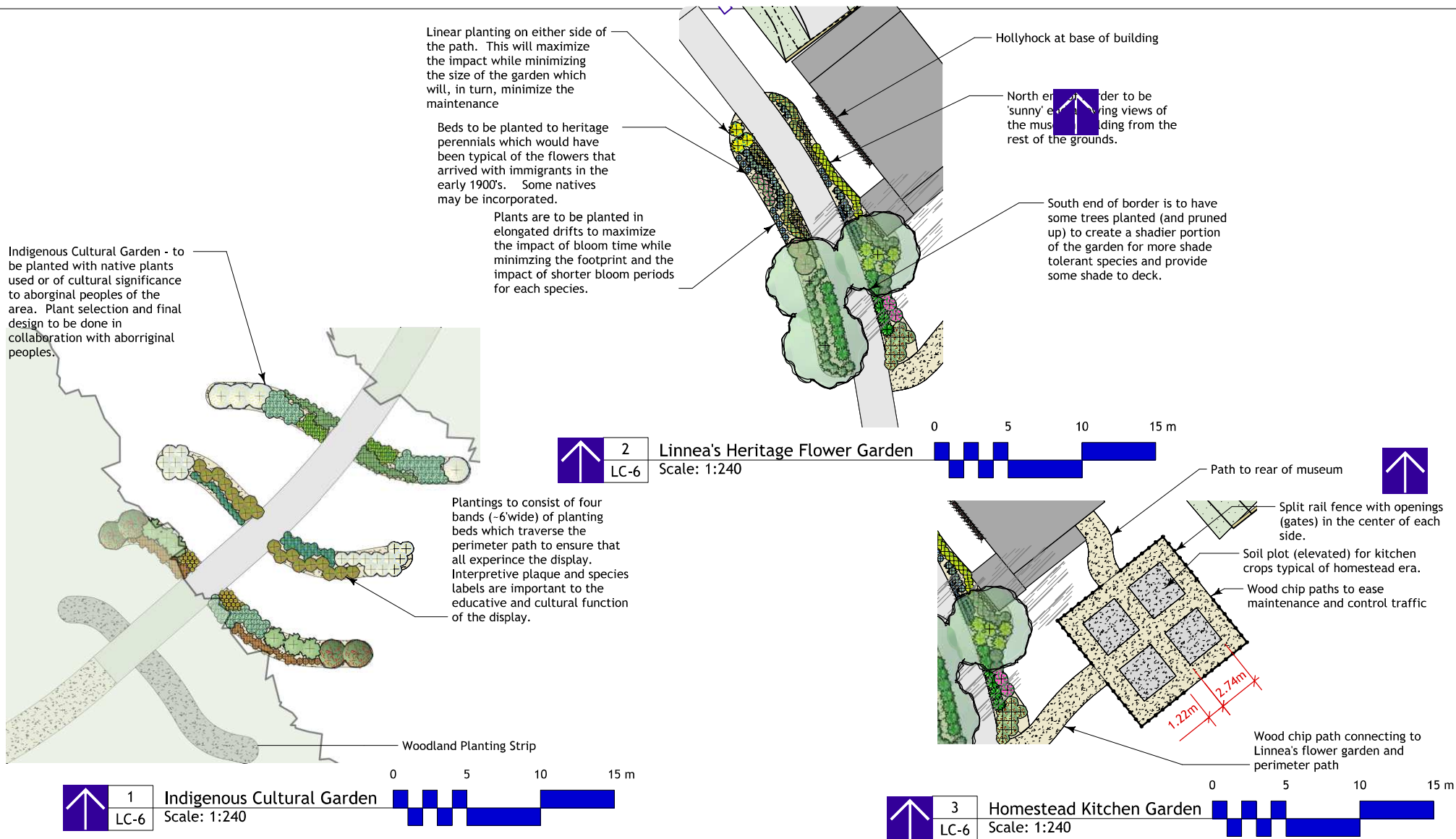


No.	Date	Issue Notes
Drawing No.		

LC-5 of 8

Halliday Park Master Plan Lac du Bonnet and District Historical Society TeePee, Play, & Picnic Area





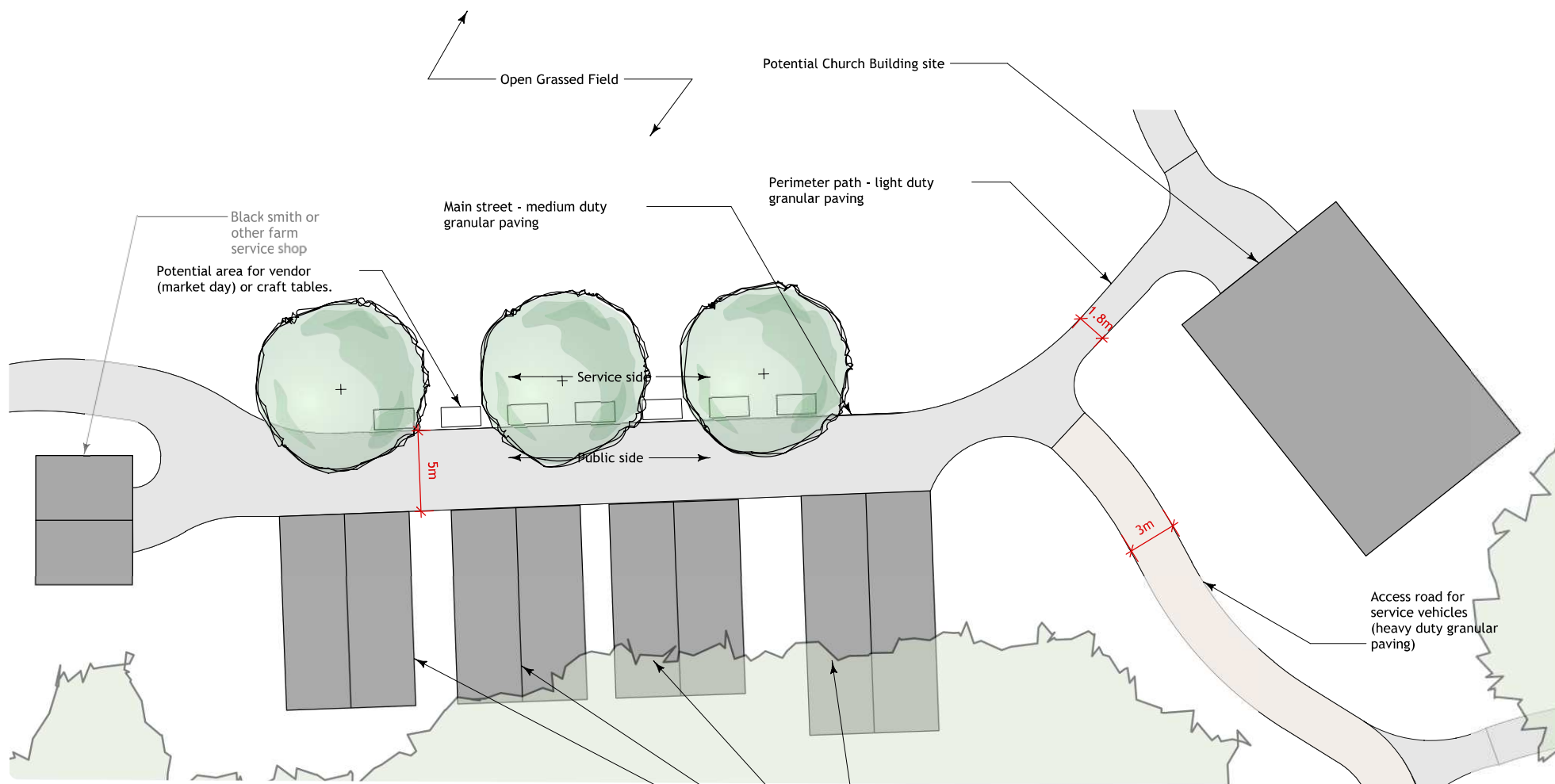
No.	Date	Issue Notes
Drawing No.		

LC-6 of 8

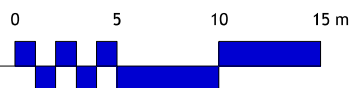
Halliday Park Master Plan

Lac du Bonnet and District Historical Society
Gardens





1
LC-7
'Main' Street
Scale: 1:240



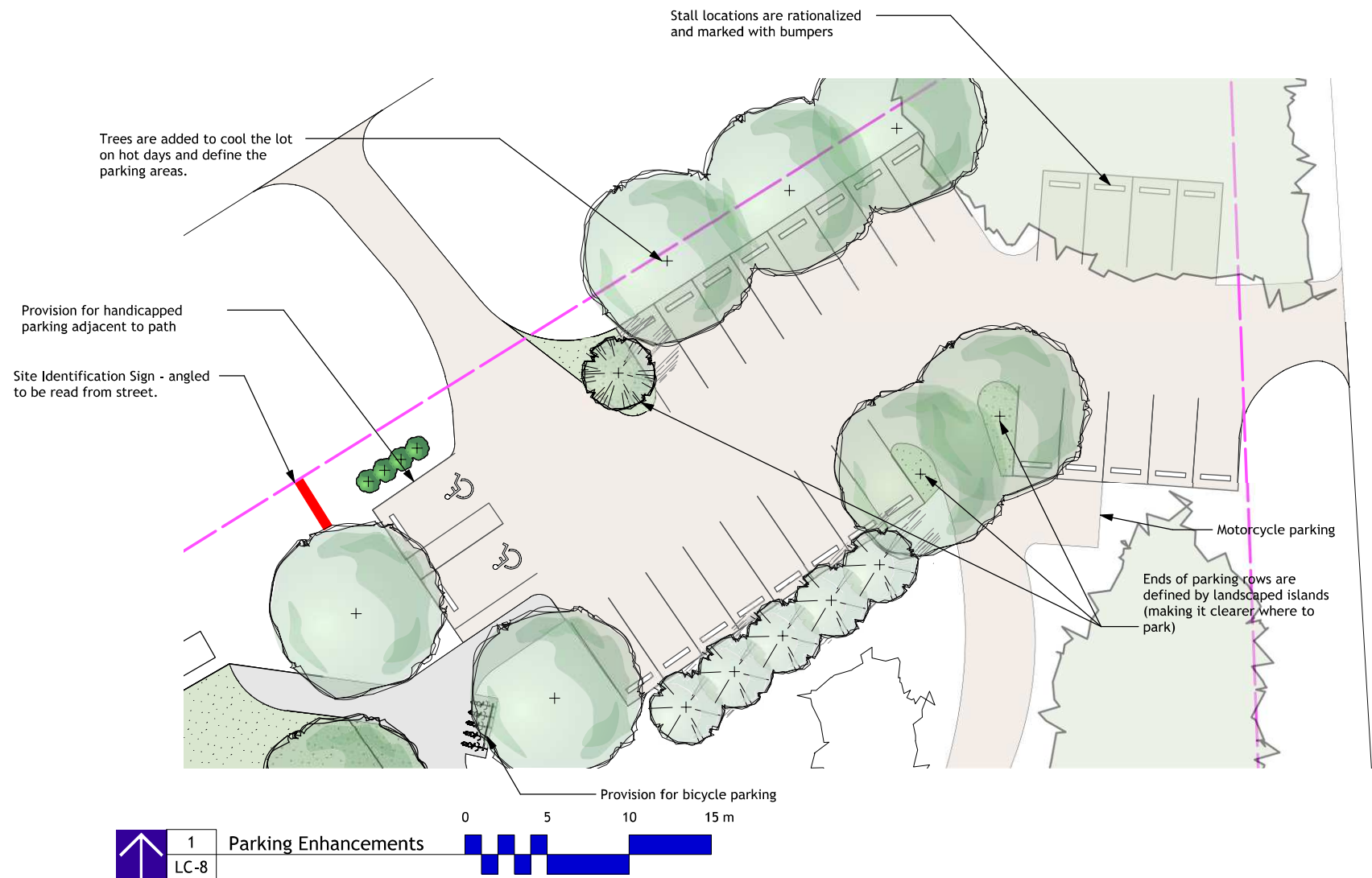
The "Village"
Any aquired buildings should go in this area. The idea is to create a one sided Main st. that is open to a park like common area. Suittable buildings should help tell the stories related to economic development and the progress of settlement. Examples would include, but not be limited to, one room schools, small churches, stores from the 30's and 40's, black smith, etc.

No.	Date	Issue Notes
Drawing No.		

LC-7 of 8

Halliday Park Master Plan Lac du Bonnet and District Historical Society 'Main' Street





No.	Date	Issue Notes
Drawing No.		

LC-8 of 8

Halliday Park Master Plan Lac du Bonnet and District Historical Society Parking Enhancements

